



# CORPORATE PRESENTATION SOL-GEL BRAIN DELIVERY PLATFORM FOR PARKINSON'S DISEASE

**Q2 2025**

CSE: PREV  
OTCQB: PRVCF  
FSE: 18H



# DISCLAIMER

This presentation and its appendices (together the “Presentation”) have been prepared and delivered by PreveCeutical® Medical Inc. (“PreveCeutical” or the “Company”) (CSE: PREV, OTCQB: PRVCF, FSE: 18H). The Presentation and its contents are strictly confidential and may not be reproduced or redistributed, in whole or in part, to any other person than the intended recipient without the Company's written consent.

The Presentation is prepared for discussion and informational purposes only. The Presentation does not constitute, and should not be construed as, any offer or invitation or recommendation to buy or sell any of the securities issued by the Company and does and will not constitute or form or be part of any offering material. This Presentation is not meant for and should not be distributed to U.S. Persons (as defined in Regulation S of the United States Securities Act of 1933, as amended) or otherwise distributed in the United States of America.

The Presentation contains information which has been sourced from third parties believed to be reliable, but without independent verification by the Company, its board of directors, management, employees, consultants, agents, or affiliates. The Presentation contains certain forward-looking statements relating to the potential business, financial performance and results of the Company and/or industries and markets in which it is or may operate within, including forward-looking forecasts. These statements may contain words such as “will”, “expects”, “anticipates”, “believes”, “estimates” and words of similar import. Any forward-looking statements and other information contained in this Presentation, including assumptions, opinions, forecasts and views, including those cited from third party sources, are solely opinions and forecasts which are subject to risks, uncertainties and other factors that may cause actual events to differ materially from any anticipated development. As such by the nature of any forward-looking statement, relying on such statements involves risk.

This Presentation has not been reviewed or registered with any public authority, stock exchange or regulated market-place.

By attending/reviewing/reading or receiving this Presentation you acknowledge that you will be solely responsible for your own assessment of the information herein, and the market and the market position of the Company and that you will conduct your own analysis and be solely responsible for forming your own view of the potential future performance of the Company or any potential future investment in the Company. Neither the Company, its management or board of directors, nor any subsidiary of the Company or any such person's board of directors, management or affiliates makes any undertaking, representation or warranty (express or implied) as to the accuracy or completeness of the information (whether written or oral and whether or not included in this Presentation including related to any materials referred to or otherwise incorporated by reference herein) concerning the matters described herein. Neither the Company nor any subsidiary of the Company or any such person's board of directors, management, employees, consultants, agents, or affiliates accepts any liability whatsoever as to any errors, omissions or misstatements contained herein and, accordingly, neither the Company nor any subsidiary of the Company or any such person's affiliates, agents, officers, directors, employees, and consultants accepts any liability whatsoever arising directly or indirectly from the use of this Presentation or the information included herein.

The Presentation speaks and reflects prevailing conditions and views as of the date denoted on the cover page. It may be subject to corrections and change at any time without notice. Neither the Company nor any subsidiary of the Company or any such person's board of directors, management, employees, consultants, agents, or affiliates intends to, and neither the delivery of this Presentation nor any further discussions with any recipient shall, under any circumstances, create any implication that the Company or any of the aforementioned parties assumes any obligation to update or correct the information herein unless required by applicable law. The information in this Presentation is current as of the date of this Presentation noted on its first page, and readers are encouraged to review the Company's public filings on its SEDAR profile on [www.sedar.com](http://www.sedar.com).

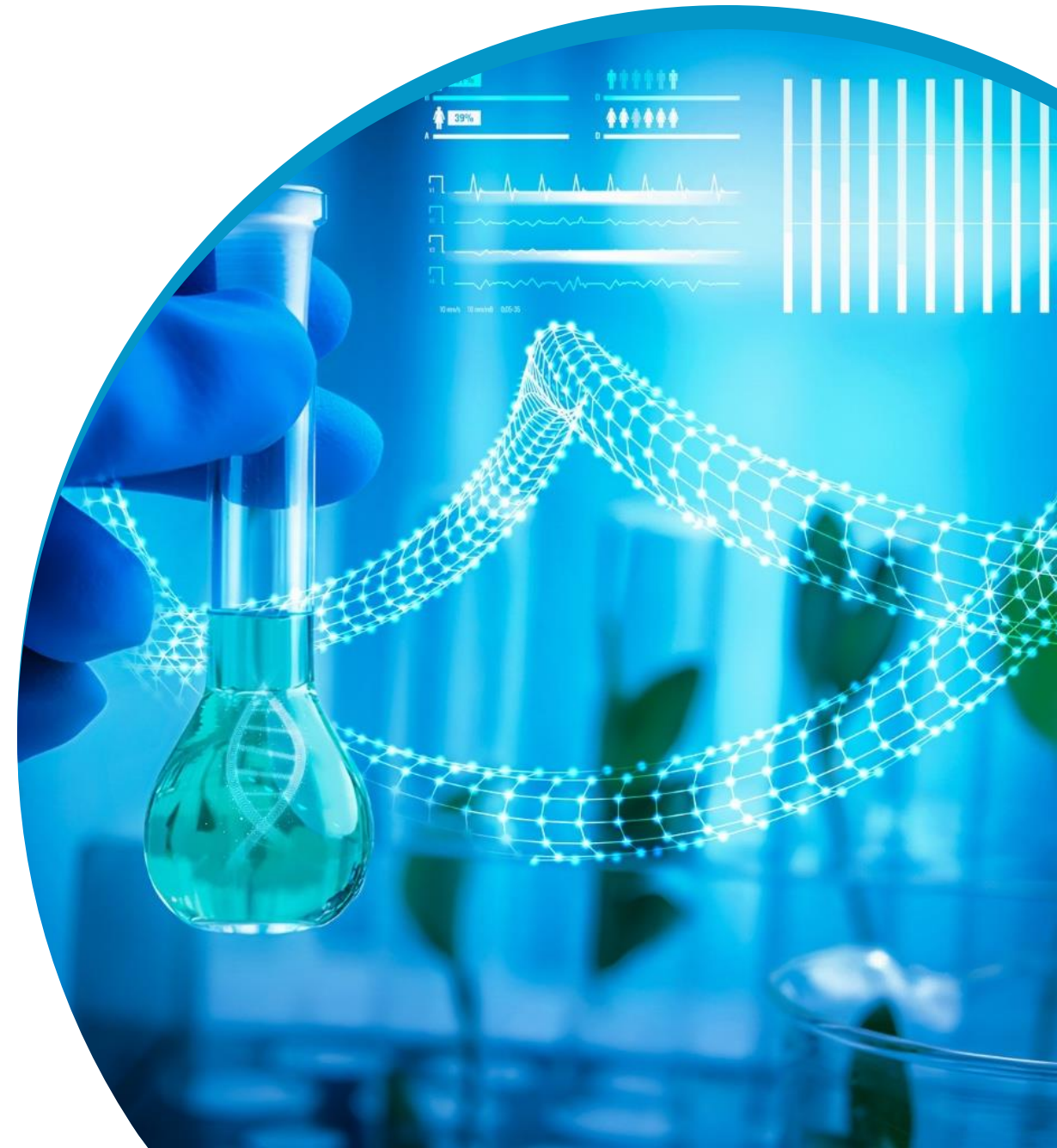
# CORPORATE OVERVIEW

Preventive health sciences company with corporate offices in Vancouver, Canada, and wholly-owned subsidiary in Brisbane, Australia.

Leverage innovative science & technology to enhance natural products as novel targeted therapeutics in a diverse portfolio of R&D programs addressing significant life-affecting disease.

Focus on developing Nature Identical® products and therapies for health-conscious consumers and becoming a trusted provider of preventive health solutions, globally.

Building an extensive library of intellectual property (IP) to support JV's, development, and licensing opportunities with leaders in the biopharmaceutical and medicinal cannabis industry.





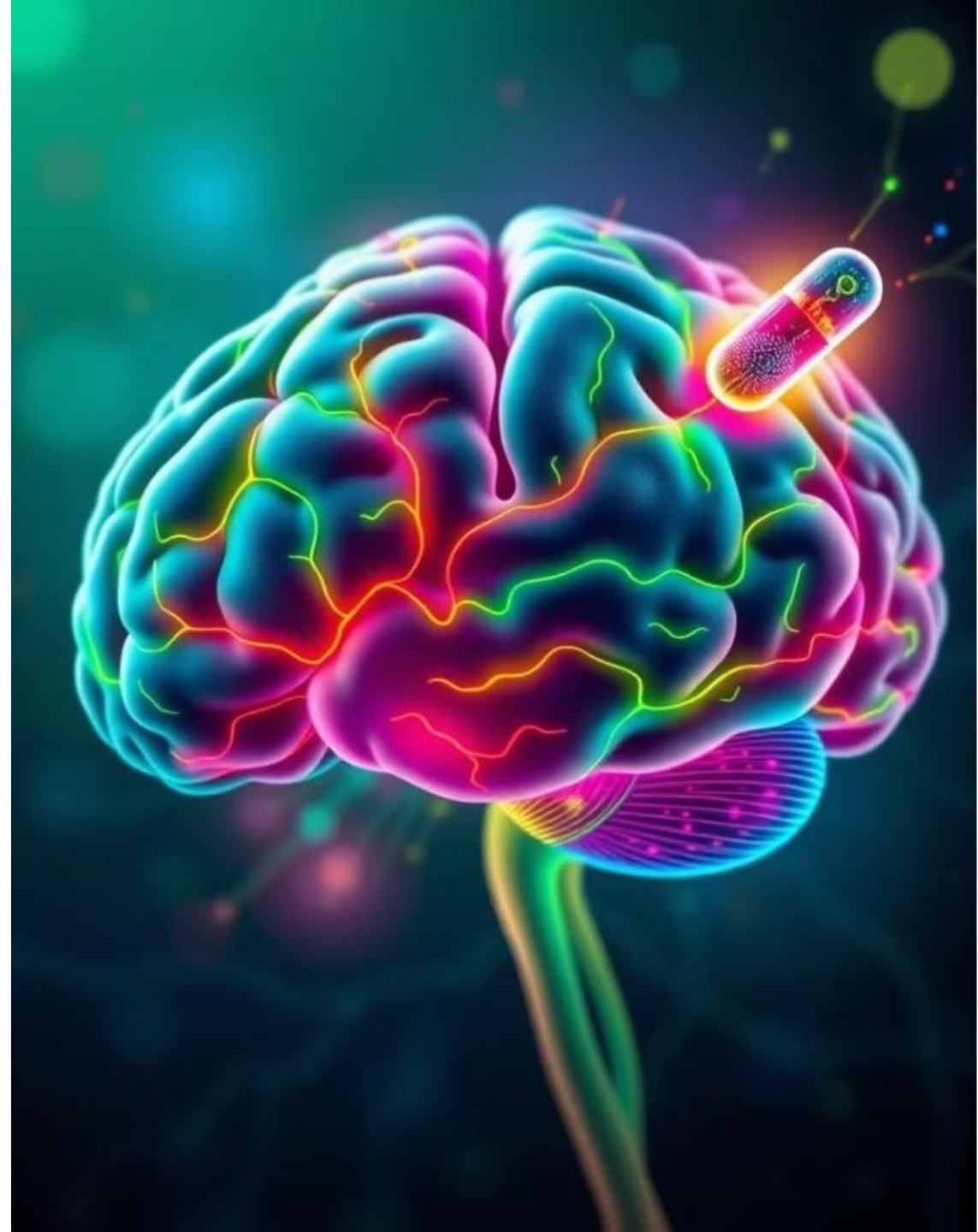
# SOL-GEL PLATFORM: REVOLUTIONIZING DRUG DELIVERY TO THE BRAIN

The Sol-Gel platform:

is an adaptable aqueous-based formulation  
employing FDA-approved excipients

provides controlled and sustained delivery of  
therapeutics

is amenable to various routes of administration,  
including intranasally for direct-to-brain delivery for  
enhanced drug bioavailability with reduced side  
effects.



# HOW DOES THE SOL-GEL WORK?

It is a **solution** that is engineered to rapidly **gel** upon contact with mucosa

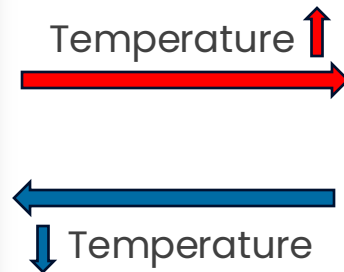
Supports controlled and sustained release to and through the mucosa

Compatible with active pharmaceutical ingredients (APIs) of diverse chemical nature **such as** siRNA, mRNA, DNA, antibodies (and their fragments), small molecules etc.

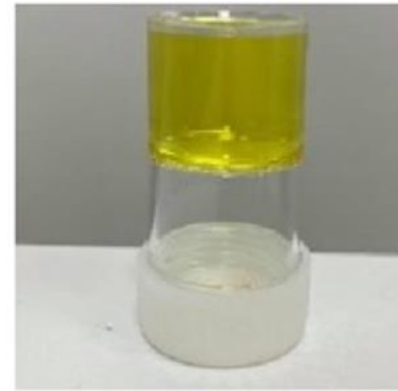
## Room Temperature (Solution)



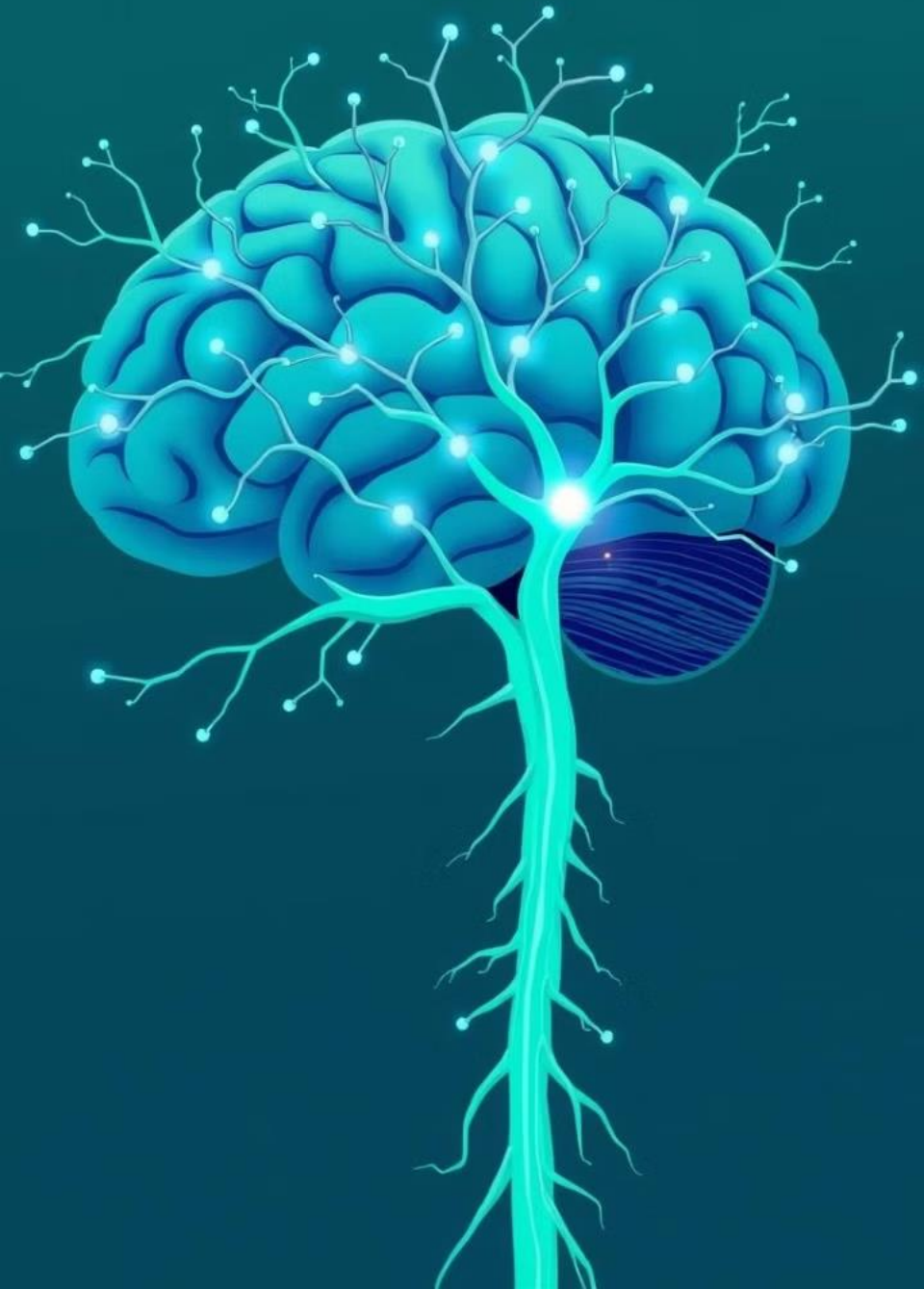
Solution state permits spraying via devices and extensive/uniform tissue coverage



## Body Temperature (Gel)



Mucoadhesive functional gel promotes sustained & controlled delivery



# VERSATILE ADMINISTRATION & PATENTED TECHNOLOGY



## Multiple Routes

Amenable to nasal, buccal, throat, ear, topical, vaginal and rectal administration



## Patented

Proprietary technology for safe and effective delivery of diverse therapeutic entities

Sol-Gel offers sustained delivery – from hours thru to days

# SOL-GEL DELIVERY

WHY NOSE-TO-BRAIN?



01

## Direct Drug Delivery to Brain

Patient outcomes of CNS (central nervous system) drugs is hinged upon effective and sustained delivery to whole brain



02

## Challenges with Oral Route

Rapid breakdown of enzymes in gut; incidences of GI distress on oral consumption



03

## BBB Permeability

Challenging to reach the brain with drugs to treat neurological disorders due to the blood-brain barrier



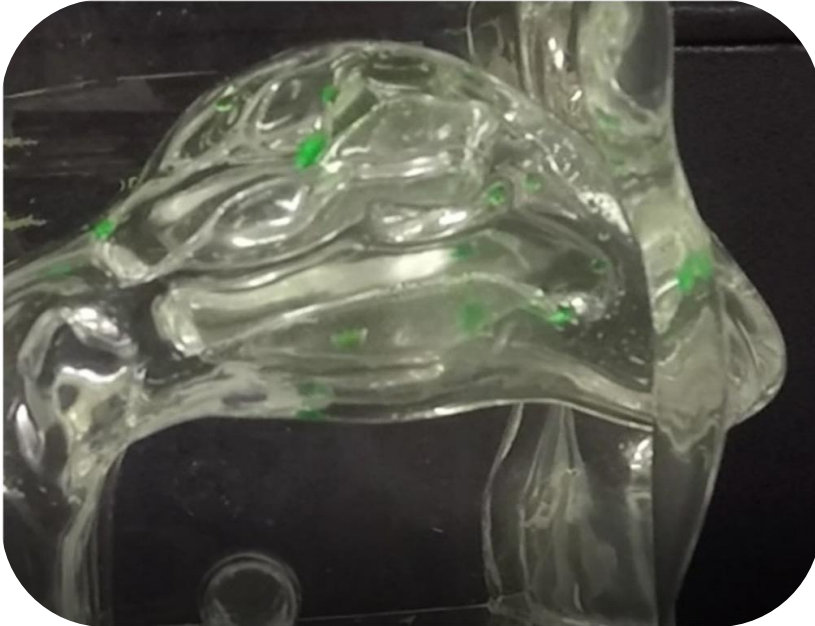
04

## Leverage Olfactory Pathway

Ideal pathway to deliver drugs directly to the brain via the Sol-gel platform



# SOL-GEL PLATFORM TECHNOLOGY & DEVICE



Conventional nasal sprays deliver formulation throughout the nasal cavity, and are rapidly cleared...

- Anterior & posterior leakage
- Rapid ciliary clearance
- Poor retention
- Unpredictable transmucosal delivery



Olfactory mucosa targeting, rapid sol-to-gel transition, muco-retention leading to sustained delivery

- Exclusive olfactory targeting
- Direct, rapid nose-to-brain delivery
- Mucoadhesive sol-gel provides for sustained & controlled delivery
- Patient-friendly vehicle



# KEY APPLICATIONS & THERAPEUTIC TARGETS

## CNS Disorders

Targets the central nervous system for neurological and psychiatric conditions **e.g. Parkinson's disease.**

---

## Infectious Diseases

Can address infectious diseases impacting the CNS e.g. Meningitis, encephalopathies.

---

## Sustained Delivery

One dose offers sustained delivery for extended periods, at a fraction of oral doses.  
Ideal for antibiotics, biologics, antifungals and where by-passing the GI tract is required.



“Sol-gel technology has certainly shown significant promise in laboratory testing at this point. Eventually, I would like to see this proprietary technology be successfully applied to a drug which could be targeted for CNS delivery. At the right time, we would welcome an opportunity to work with a pharmaceutical or biotechnology company to co-develop the Sol-gel and Sol-gel Applicator to be used in pharmaceutical and therapeutic products.”

– **President & Chief Science Officer,  
Dr. Mak Jawadekar.**

# FUNCTIONAL ADVANTAGES

- ✓ Innovative delivery system
- ✓ Micro-dosing to potentially reduce or eliminate side effects
- ✓ Sustained release; potentially for bi-weekly dosing
- ✓ Precision delivery; greater bioavailability
- ✓ Significant potential across a broad range of CNS disorders
- ✓ Amenable to nasal, buccal, throat, ear, topical, vaginal and rectal routes
- ✓ Compatible across a diverse range of API classes
- ✓ Altogether avoids the gastrointestinal tract and associated distress
- ✓ Potential for combination therapies

Sol-gel mediated delivery is designed to create a sustainable competitive advantage over current, conventional administration pathways

# PARKINSON'S DISEASE

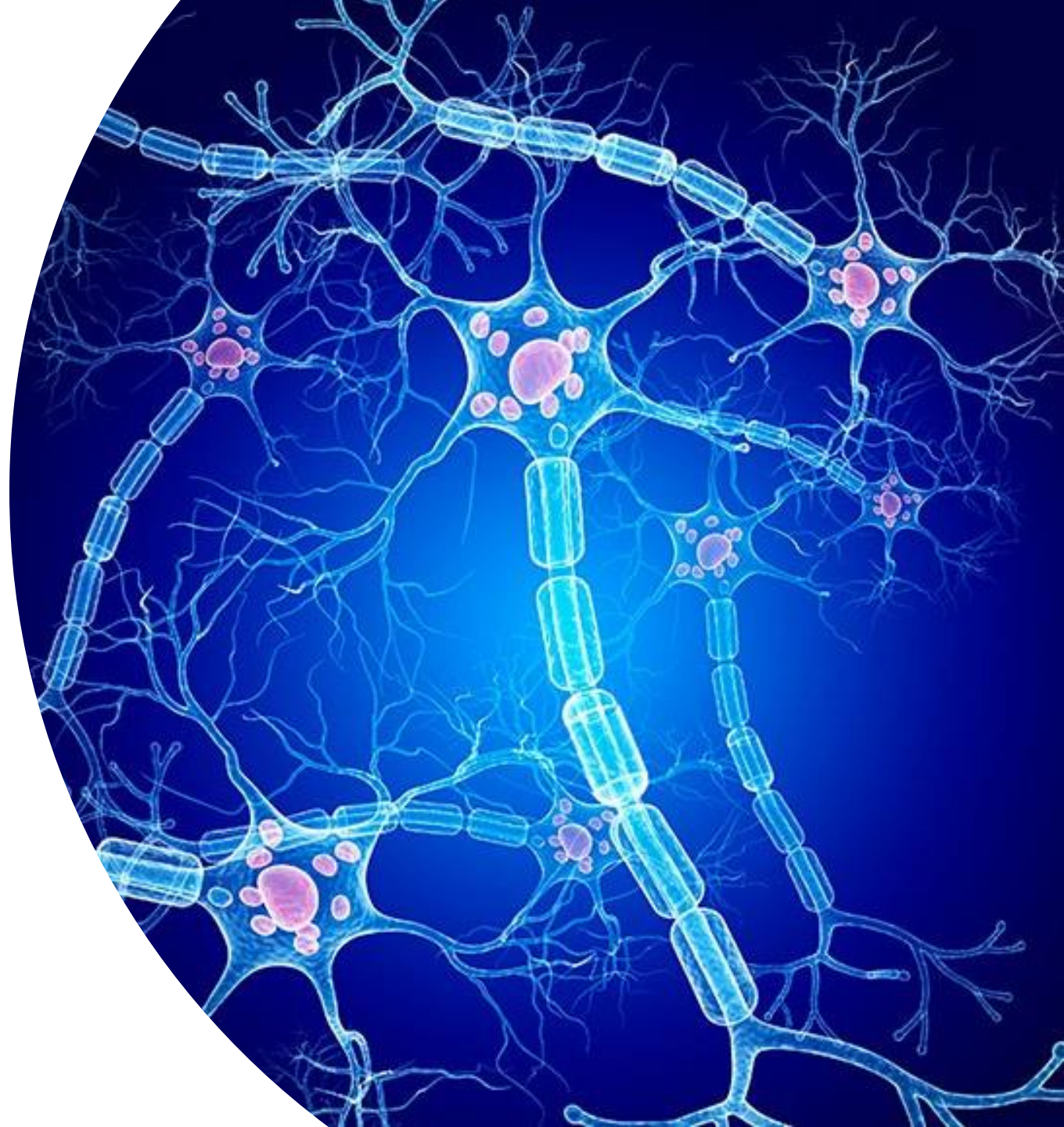
## What is Parkinson's Disease?

A progressive neurological disorder characterized by the degeneration of dopamine-producing neurons within the brain, leading to various motor and non-motor symptoms.

While its primary impact is on movement, it also affects mental health, sleep patterns, and aspects of everyday life.

Symptoms typically include tremors, stiffness, and difficulty with movement and balance, which worsen as the disease progresses.

The main pharmacological treatment for Parkinson's disease is **levodopa (L-Dopa)**, a precursor of dopamine.





## PARKINSON'S DISEASE – MARKET SIZE

In 2024, it was estimated that 10 million people globally were living with Parkinson's disease ([citation](#)).

Parkinson's disease will affect over 25 million people by 2050 ([citation](#)).

Parkinson's disease treatment market to reach US\$11.66 billion by 2030 ([citation](#)).

Levodopa (L-Dopa) to grow market share 25–35% in 2025 ([citation](#)).

L-Dopa sales projected to reach over US\$4.32 billion by 2030 ([citation](#)).





# Parkinson's Disease Current Treatment

Effective management of symptoms in Parkinson's disease relies on steady state brain concentrations of L-Dopa.

However, current oral L-Dopa treatment results in fluctuations in brain drug concentration, which contribute to the side effect profile.

## Why does L-Dopa dominate the market:

- Proven efficacy against key symptoms: tremors, stiffness and bradykinesia
- It is the most prescribed treatment option in early & mid-stage disease despite an array of side effects such as loss of appetite, diarrhea, dry mouth, constipation, mouth and throat pain, taste disturbance, forgetfulness, body aches, chills, dizziness, fever, confusion, headache, delusion, and drowsiness.



# Parkinson's Disease Innovative Therapy with L-Dopa Sol-gel Nasal Spray

## Key features:

- Achieves and maintains steady state drug concentration in whole brain, within minutes
- Sustained L-Dopa release profile from sol-gel avoiding peak-&-valley fluctuations
- Supports extended dosing regimen, with substantive dose reductions (*c.f.* oral route)
- Comprehensively by-passes the GI tract and peripheral tissue/organs, thus improving patient safety and compliance



# Direct-to-brain 'dopamine' delivery...

- Currently, the endogenous neurotransmitter dopamine is not used in the treatment of Parkinson's disease as it cannot cross the blood-brain barrier and is rapidly metabolized in the periphery.
- Dopamine is a promising candidate for sol-gel mediated brain delivery, where it can directly act to alleviate disease symptoms.

## **Preveceutical plans to bridge this historical treatment gap with its Sol-Gel technology, paving the way for Dopamine direct, nose-to-brain delivery**

- This innovative approach would create an entirely new treatment option for Parkinson's disease, targeted to patients with advanced disease where the dopaminergic neurons, which produce dopamine in the brain are no longer functional.
- Currently, only highly invasive treatments such as deep brain stimulation are available to advanced stage patients.



# PREVECEUTICAL TEAM



**Stephen Van Deventer**  
– Chairman and Chief Executive Officer

Mr. Van Deventer is an experienced businessman and corporate director. Specializing in international corporate relations and business development over the last thirty-five years, Mr. Van Deventer has focused on launching small to medium-sized companies into the public markets in Canada, the United States, Europe and Australia. He has also owned and operated private companies.



**Mak Jawadekar PhD**  
– President, Chief Science Officer and Director

Dr. Jawadekar completed his Ph.D. in Pharmaceuticals at the University of Minnesota. Dr. Jawadekar worked at Pfizer Inc. for twenty-eight years, where he most recently acted as the Director of Portfolio Management. During his career, he was responsible for drug delivery technology assessments involving external drug delivery technologies. Dr. Jawadekar has extensive experience in creating and cultivating external partnerships and alliances for drug delivery technologies.



# PREVECEUTICAL TEAM



**Linnéa Olofsson PhD**  
– Director

Dr. Olofsson is an accomplished biophysicist with 12 years of laboratory research experience in academia, and 3 years working in the private sector as scientific support and equipment sales. She successfully advances science by providing counsel and training to the scientific community, contributing to executing strategic marketing plans by working in conjunction with the sales team members to identify and qualify sales leads through technical discussions. Dr. Olofsson closely collaborates with corporate strategic decision-making processes to penetrate new market applications to increase return on investment.



**Kathy Rokita CPA**  
– Director

Ms. Rokita is a finance, operations, and strategy-focused executive having extensive experience with large medical groups. Her involvement includes business development, information reporting, analytics, and improvements in financial performance and operational processes. She has a background in treasury management, budgeting, as well as mergers and acquisitions. Kathy has been appointed to PreveCeutical's audit committee. Kathy also selflessly dedicates time to volunteering as a board member for St. Vincent Hospital Foundation and Angelman Syndrome Foundation, where she served as Treasurer and President of the Board of Directors.

# PREVECEUTICAL TEAM



**C. Evan Ballantyne**  
– Director

Mr. Ballantyne has extensive executive leadership experience and has spent the last 20 years as a public and private company Chief Financial Officer in the healthcare industry. He was most recently the CFO of OncXerna Therapeutics Inc. where he worked to advance partnering opportunities for the company's biomarker program. Prior to OncXerna, Ballantyne was CFO at Orchestra BioMed Inc. where he assisted with the closing of two equity financing rounds with proceeds of \$57 million. At Orchestra, he also helped close a global partnership deal valued at more than \$200 million.



**Harry Parekh PhD, BSc Hons I**  
– Chief Research Officer

Based at the University of Queensland's (UQ) School of Pharmacy & Pharmaceutical Sciences (SPPS) in Brisbane, Australia, Dr. Parekh also holds an adjunct faculty position at Manipal University, India.

Dr. Parekh heads the Drug/Gene Delivery Group, and is Director of Research at UQ's SPPS. His team develops highly innovative and translational medicine delivery systems in-conjunction with physicians whose expertise span cancer, obesity-&-diabetes, macular disease, infectious disease, and neurological/psychiatric conditions.

# PREVECEUTICAL TEAM



**Louis Lapointe**  
– Director of Business Development

Mr. Lapointe is a business professional and investment banker with twenty-five years of experience across a myriad of business disciplines. He is French – English bilingual, in both the spoken and written word. Mr. Lapointe has board experience in private and publicly listed companies with extensive management and strategic planning experience. Oriented toward concrete results, Mr. Lapointe has a well-rounded knowledge of sales and marketing and national and international product placement.



**Sydney Cole**  
– Executive Assistant & Office Manager

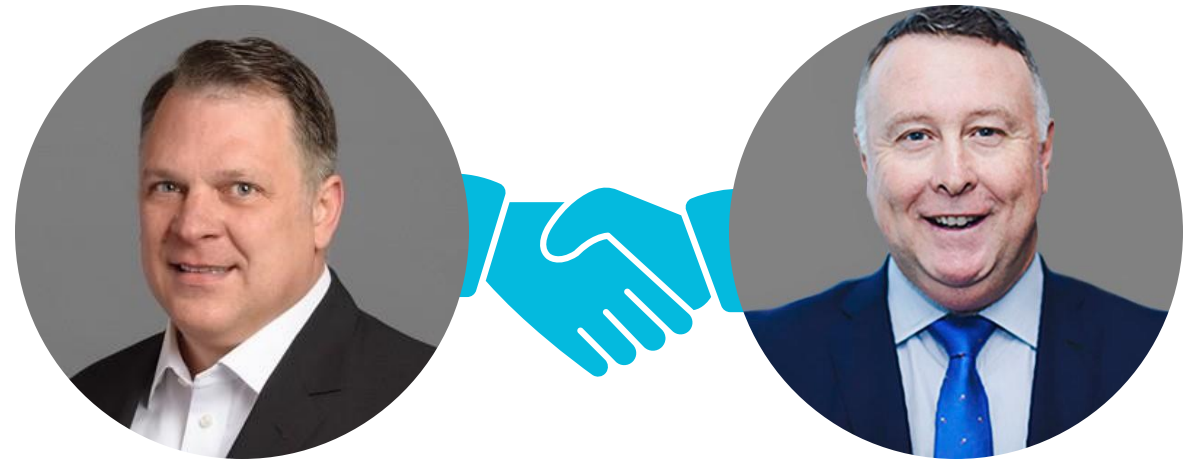
Ms. Cole has held Administration Support and trainer roles within the Hospitality Industry for seven years. Ms. Cole has also worked for a Venture Capital company for seven years as an executive assistant and office manager. From bookkeeping to event coordination Ms. Cole's organization and fortitude keep operations running smoothly.

# PREVECEUTICAL AUSTRALIA TEAM

PreveCeutical® has established a wholly-owned subsidiary in Brisbane, Queensland, Australia, to bolster their research and development interests.

The Australian team, which will be led by Stephen Van Deventer, the Chief Executive Officer, will work closely with Dr. Harry Parekh, PreveCeutical's Chief Research Officer, to advance the company's therapeutic pipeline.

The office will also allow for better engagement with commercial partners on other ventures that PreveCeutical is pursuing in the region.



Stephen Van Deventer  
Chairman and Director

James Henderson  
Independent Director



# STRATEGIC ADVISORS/COLLABORATORS

## Dr. Ajit Shetty

Dr. Shetty has extensive pharmaceutical experience leading commercial and supply chain operations as well as significant educational background including a PhD in Metallurgy from Trinity College at Cambridge University. Dr. Shetty spent 36 years at Johnson & Johnson ("J&J") in a wide range of global roles. From 2007 to 2012, he served as Corporate Vice President, Enterprise Supply Chain reporting to the CEO and was responsible for the transformation and optimization of J&J's supply chain. In addition, from 2004 to 2012, he served as chairman of Janssen Pharmaceutical.

## Aditya Bahl

Mr. Bahl brings over 20 years of experience in pharmaceutical marketing and clinical development and is known for his entrepreneurship and creativity. He is the CEO and founder of RAS LSS, a boutique healthcare consulting group based in Germany providing strategic guidance to biotechnology and pharmaceutical companies on franchise and product strategy, clinical development and commercialization.

# STRATEGIC ADVISORS/COLLABORATORS

## Dr. Bryan Jones

Dr. Jones has more than 30 years of experience with biotech and specialty pharmaceutical companies with roles in product and business development. Currently, he is the COO of Aardvark Therapeutics. Previously, he served as COO and Co-Founder of Sollis Therapeutics and Vice President of Operations at Sorrento Therapeutics; he led the Resiniferatoxin program. Dr. Jones received his PhD. in Genetics from the University of Washington and a bachelor's degree in biology and biochemistry from Iowa State University.

# KEY PARTNERS



THE UNIVERSITY  
OF QUEENSLAND  
AUSTRALIA



DUMOULIN  
BLACK

griffith<sup>+</sup>  
hack

IP Amplified



RAS

# FOR FURTHER INFO CONTACT



Stephen Van Deventer  
[info@preveceutical.com](mailto:info@preveceutical.com)



Investor Relations  
[ir@preveceutical.com](mailto:ir@preveceutical.com)



1 (604) 416-7777